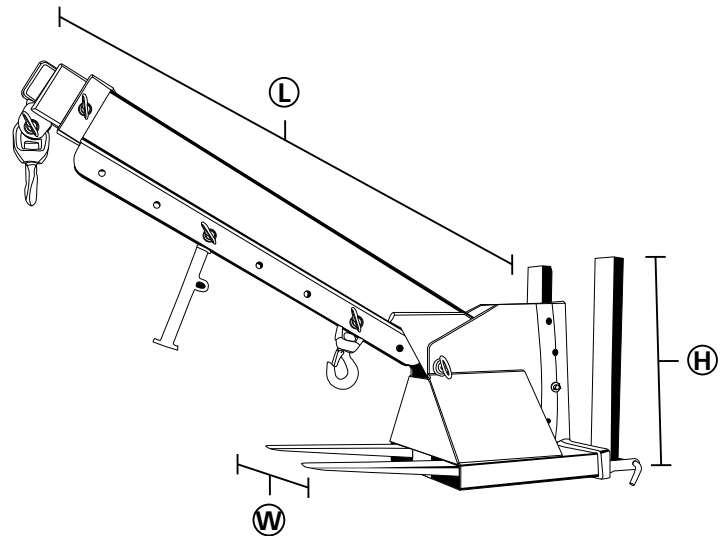


# PRODUCT CODE: FA807

PRODUCT DESCRIPTION: ADJUSTABLE ANGLE FORKLIFT CRANE ARM  
 PRIMARY FUNCTION: CONVERTS FORKLIFT TRUCK INTO LONG REACH MOBILE CRANE  
 WORKING LOAD LIMIT: 2.5T & 5.0T VERSIONS AVAILABLE



**WORKSAFE:** Refer to forklift capacity guidelines before use. Safety guidance for transporting suspended loads can be found in: Construction Plant Hire Association document CPA 1101-Safe Use of Telehandlers In Construction. This guidance should be followed to reduce risk of tipping the forklift.

**NOTE:** Where the weight of the load cannot be accurately established the notional weight must be multiplied by an appropriate factor (typically 1.5) to allow for possible inaccuracies. If load weight cannot be established do not use this equipment.

| Cap. Kg | H mm | L mm | W mm | Wt. Kg |
|---------|------|------|------|--------|
| 2500    | 480  | 2100 | 500  | 260    |
| 5000    | 480  | 2100 | 500  | 260    |

| Distance mm      | 700  | 900  | 1100 | 1300 | 1500 | 1700 | 1900 | 2200 | 2500 | 2800 | 3100 | 3400 | 3700 |
|------------------|------|------|------|------|------|------|------|------|------|------|------|------|------|
| 2500 Kg Cap (kg) | 2500 | 2500 | 2500 | 2500 | 1800 | 1600 | 1300 | 1100 | 950  | 800  | 700  | 600  | 580  |
| 5000 Kg Cap (kg) | 5000 | 4100 | 3200 | 2750 | 2300 | 2100 | 1800 | 1600 | 1400 | 1250 | 1175 | 1000 | 950  |

POWERED BY KNOWLEDGE

DISCOVER MORE, VISIT [WWW.CQEGROUP.COM](http://WWW.CQEGROUP.COM)

## BASIC SAFETY

**IMPORTANT:** Read these instructions before using this equipment. If there is anything you do not understand or if you have any concerns DO NOT use this equipment. Contact your supervisor or Conquip for advice.

You should check that you have considered all the safety requirements for the task you are doing and that this equipment is suitable.

You must protect bystanders and the general public by preventing access to the working area.

DO NOT use this equipment if you are tired, unwell or under the influence of alcohol or drugs. If you are taking any medicine or undergoing treatment you should inform your supervisor.

You must be competent, alert and medically fit when using this equipment. If you have a medical condition, a mental or physical disability, you must seek advice from a medical professional before using this equipment.

A RISK ASSESSMENT must be completed by a competent person before using this equipment to control risks, produce a safe system of work and ensure safety for you, your colleagues and others.

Your risk assessment will determine the correct Personal Protective Equipment (PPE) for the task you are doing. You MUST use it.

Conquip recommends that you should wear:

- Suitable Clothing
- Gloves
- Hard Hat
- Protective Footwear (steel toecaps)



DO NOT wear loose clothing or jewellery and tie back long hair to avoid becoming tangled or trapped in this equipment. You MUST make everyone in the work area aware of what you are doing. NO SURPRISES.

This equipment should be operated, stored and transported upright.

Make sure you know how to use this equipment and understand all aspects of its operation in case of emergency. This equipment weighs more than 25 kg. DO NOT lift or manhandle without machine assistance.

This equipment must be inspected by a competent person before use and then regularly, as determined by your risk assessment or working practice. If you have any concerns about condition or suitability DO NOT USE.

DO NOT operate this equipment near overhead power lines.

TAKE CARE in confined spaces, near ceilings or similar hazards.

This equipment was designed for vertical lifting. DO NOT drag, tilt or swing.

Before lifting, check that the load is balanced and stable. Keep all personnel clear of raised loads and far enough away to allow for movement caused by a shifting load.

CRUSH RISK. Keep hands and feet clear of this equipment at all times to avoid injury.

DO NOT LEAVE UNATTENDED. The operator must remain in control of this equipment whenever it is loaded.

Before lowering a load make sure that the landing zone is clear and capable of accepting the size and weight of the load.

Total weight of the equipment plus the load must not exceed 50% of the forklift WLL.

Manoeuvre loaded or raised equipment carefully. Travel and turn slowly to avoid unit becoming unstable.

Please distribute the load in this equipment evenly.

DO NOT exceed the maximum working load limit shown on the serial plate.

Before lifting, forks must be fully engaged and the security chain or heel pins MUST BE correctly fitted.

HEAD, HANDS & FEET must be kept clear.

Trucks used for lifting and moving this equipment must be capable of lifting the equipment and its load.

DO NOT exceed WORKING LOAD LIMIT.

Before operating this equipment make sure that the working area is clear of hazards, obstructions and personnel.

Check that the equipment has the correct load rating and dimensions for the intended load.

Before operating this equipment, check that you have enough space for you to work safely. Allow space for the equipment to move if the load shifts.

### BEFORE USING THIS CRANE ARM:

- Check these operating guidelines in full.
- Check the forklift manufacturer's operating instructions.
- Check the operator risk assessments for the site and the task.
- Check your safe system of work.
- Familiarise yourself with the equipment.
- Check that the crane arm is in good condition with all parts present and correct.

If you have any concerns or questions DO NOT USE the equipment; contact your supervisor or Conquip Engineering Group.

### TO ATTACH THE CRANE ARM TO A FORK LIFT

#### SET UP

The FA807 is supplied with a heel pin; this must be fitted correctly before use. If the heel pin is missing do not use the equipment, do not use alternatives and contact Conquip Engineering Group for a replacement.

To attach the FA807 you must first release the heel pin by removing the lynch pin and pulling from the attachment, set the machine's forks to the correct width ensuring they are an equal distance from centre, align the machine's forks with the fork pockets of the FA807. Drive the forks fully into the two fork pockets, switch off the forklift engine. Insert the heel pin ensuring it passes behind the heel of the fork, use the lynch pin to lock the heel pin in place. The FA807 is now ready for use.

#### LIFTING AND LOWERING

The reach and angle of the jib can be adjusted to suit the operator's requirement. ALWAYS refer to the loading chart. Where the weight of the load cannot be accurately established the notional weight must be multiplied by an appropriate factor (typically 1.5) to allow for possible inaccuracies. The load may be attached to either of the hooks. The hooks can be moved to any of the locating positions, if necessary the

support leg can be moved or removed to facilitate the hook position.

This equipment is designed to lift the load clear of the ground, DO NOT drag the load. Raise and position the hook over the load ensuring that it is centrally aligned before lowering. Lower the hook and attach to the load ensuring that the hook latch closes, carefully raise the load just off the ground and check for balance and security. Do not allow hands or feet to come between or below the load. If all is OK, carefully transport the load to its required destination ensuring not to jolt the load. When in position the load can be lowered to the ground and the lifting hook can be released and lifted clear of the load.

When travelling with a suspended load, keep the load as low as practicable, keep speed and cornering to a minimum to avoid the load swinging.

### **FINALLY**

With the crane arm free of any load, lower it to the ground. Disconnect the heel pin. Reverse the forklift back and until clear then, replace the heel pins and lynch pins. All that then remains is to give everything a thorough clean ready for return.

### **EQUIPMENT MAINTENANCE AND CLEANING**

When not being used, store the unit in a clean condition and in a safe place where it will be protected from thieves and unauthorised users.

**NOTE: FAILURE TO CLEAN THIS EQUIPMENT THOROUGHLY MAY RESULT IN A CHARGE.**



### **WARRANTY**

Conquip Engineering Group products are covered by a 12 month warranty. Conquip Engineering Group undertakes to replace or repair, free of charge, any defect which the Company considers to be due to faulty workmanship or material within 12 months of the sale date, except for:

Defects arising from neglect, misuse or unauthorised modifications.

Damage caused by abuse, misuse, dropping or other similar damage caused by or as a result of failure to follow transportation, storage, loading, cleaning or operation instructions.

Alterations, additions or repairs carried out by persons other than Conquip Engineering Group or their recognised distributors. Transportation or shipment costs to and from Conquip Engineering Group or their recognised agents, for repair or assessment against a warranty claim, on any product or component.

Materials and/or labour costs to renew, repair or replace components due to fair wear and tear.

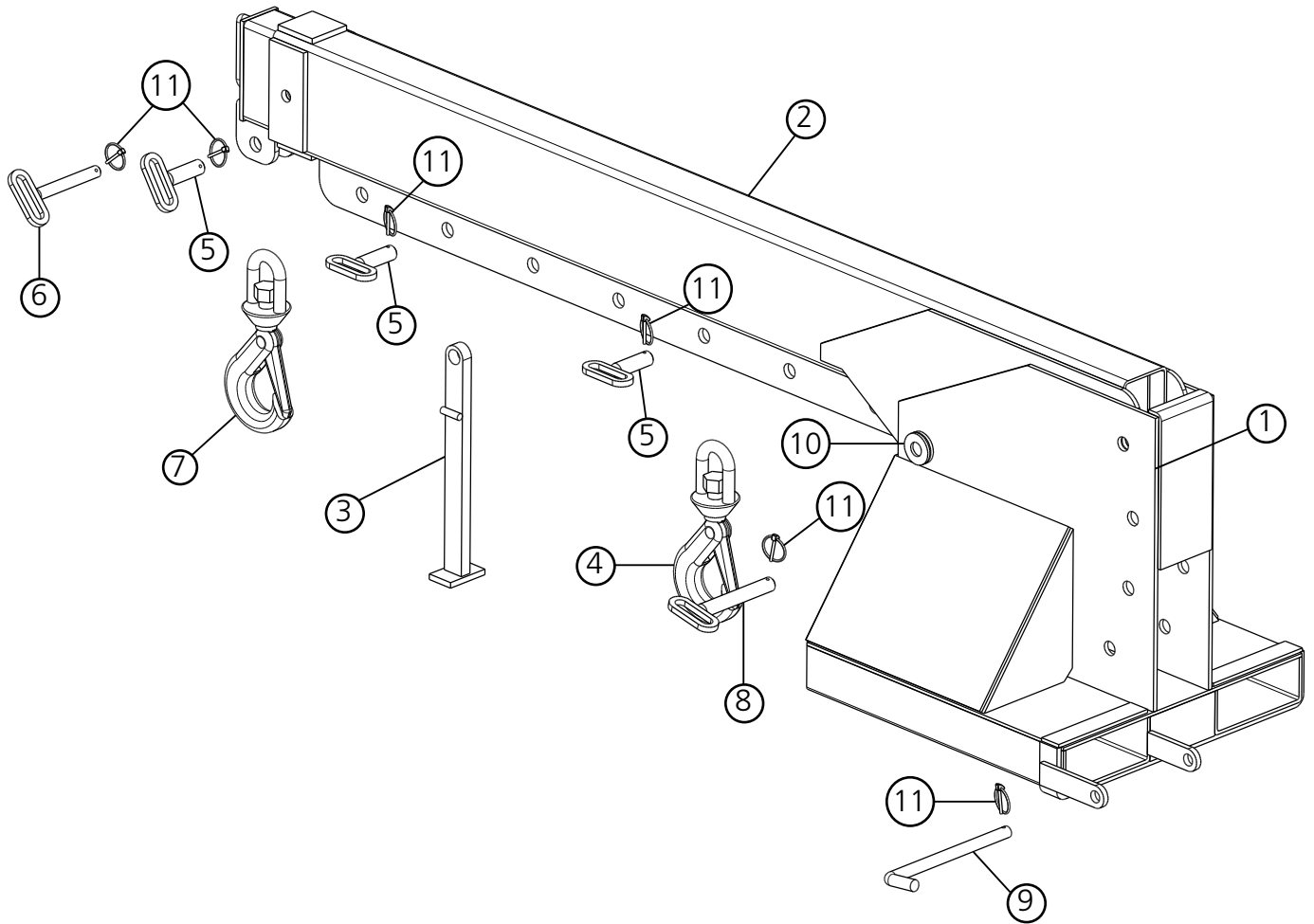
Faults arising from the use of non-standard or additional parts, or any consequential damage or wear caused by the fitting or use of such parts.

Conquip Engineering Group and/or our recognised agents, directors, employees or insurers will not be held liable for consequential or other damages, losses or expenses in connection with, or by reason of, or the inability to use the product for any purpose.

### **MODIFICATIONS**

If any third party work, modifications or alterations are to be carried out on the product which will involve any welding, drilling or any form of cutting or distortion of materials, full written approval must be obtained from Conquip Engineering Group prior to the work being carried out.

Conquip Engineering Group operate a policy of constant improvement and reserve the right to change specifications without notice.



| ITEM NO | PART NUMBER | DESCRIPTION                        | QTY |
|---------|-------------|------------------------------------|-----|
| 1       | ZZ410020    | BASE FRAME                         | 1   |
| 2       | ZZ410019    | JIB ASSEMBLY                       | 1   |
| 3       | ZZ410001    | SUPPORT LEG FOR USE WITH 25 mm PIN | 1   |
| 4       | H0720-00013 | 5TON S/L HOOK                      | 1   |
| 5       | ZZ410008    | PIN FOR HOOK                       | 3   |
| 6       | ZZ410016    | TELESCOPIC LOCKING PIN             | 1   |
| 7       | H0720-00010 | 3TON S/L HOOK                      | 1   |
| 8       | ZZ410018    | ANGLE LOCATION PIN<br>25 x 155 mm  | 1   |
| 9       | ZZ410015    | HEEL PIN                           | 1   |
| 10      | ZZ410017    | PIVOT PIN 25 x 165 mm              | 1   |
| 11      |             | LYNCH PIN                          | 6   |

© 2014 Conquip Engineering Group

TO ORDER CALL 0845 520 1101



CONQUIP ENGINEERING GROUP | WATERBROOK ESTATE, ALTON, HANTS, GU34 2UD